



RESEARCH

Open Access

# Increased longitudinal contractility and diastolic function at rest in well-trained amateur Marathon runners: a speckle tracking echocardiography study

Sebastian Schatte<sup>1,2†</sup>, Yan Xing<sup>3†</sup>, Jürgen Lock<sup>4</sup>, Lars Brechtel<sup>5</sup>, Sabrina Schroeckh<sup>1</sup>, Sebastian Spethmann<sup>1</sup>, Gert Baumann<sup>1</sup>, Adrian C Borges<sup>2</sup> and Fabian Knebel<sup>1\*</sup>

## Abstract

**Background:** Regular physical activity reduces cardiovascular risk. There is concern that Marathon running might acutely damage the heart. It is unknown to what extent intensive physical endurance activity influences the cardiac mechanics at resting condition.

**Methods:** Eighty-four amateur marathon runners (43 women and 41 men) from Berlin-Brandenburg area who had completed at least one marathon previously underwent clinical examination and echocardiography at least 10 days before the Berlin Marathon at rest. Standard transthoracic echocardiography and 2D strain and strain rate analysis were performed. The 2D Strain and strain rate values were compared to previous published data of healthy untrained individuals.

**Results:** The average global longitudinal peak systolic strain of the left ventricle was  $-23 \pm 2\%$  with peak systolic strain rate  $-1.39 \pm 0.21/s$ , early diastolic strain rate  $2.0 \pm 0.40/s$  and late diastolic strain rate  $1.21 \pm 0.31/s$ . These values are significantly higher compared to the previous published values of normal age-adjusted individuals. In addition, no age-related decline of longitudinal contractility in well-trained athletes was observed.

**Conclusions:** There is increased overall longitudinal myocardial contractility at rest in experienced endurance athletes compared to the published normal values in the literature indicating a preserved and even supra-normal contractility in the athletes. There is no age dependent decline of the longitudinal 2D Strain values. This underlines the beneficial effects of regular physical exercise even in advanced age.

## Background

There is an increasing participation in long-distance running events; there is clear evidence that regular physical activity reduces cardiovascular risk [1-3]. Still, it is unknown if the intensity of physical activity and the beneficial effects correlate linearly and whether Marathon running is dangerous for the cardiovascular system [4]. However, some studies on Marathon running raised concerns of acute and sustained myocardial injury of the left and the right ventricle assessed by cardiac

biomarkers and echocardiography [5,6]. Other studies could not confirm exercise-induced myocardial damage [7,8]. Several studies have been published with the aim of evaluation of left and right ventricular function in athletes with different forms of training including endurance recently. These studies were focused only on young and elite athletes [9,10]. Up to date, there are rare data about the cardiac mechanics at resting condition of well endurance-trained amateur athletes with a broad range of age.

Two-dimensional strain is a new Doppler independent approach for calculation of strain, strain rate, tissue velocity, and displacement. It is based on speckle tracking analysis in B-Mode and therefore less angle-dependent

\* Correspondence: fabian.knebel@charite.de

†Equal contributors

<sup>1</sup>Medizinische Klinik für Kardiologie und Angiologie, Campus Mitte, Charité — Universitätsmedizin Berlin, Charitéplatz 1, D – 10117 Berlin, Germany  
Full list of author information is available at the end of the article

than Doppler-derived strain analyses [11]. This novel echocardiographic approach has improved the assessment of myocardial regional and global systolic and diastolic function. For routine application of myocardial two-dimensional strain in clinical practice normal ranges have been defined and published recently [12,13]. It has been shown, that global 2D strain and strain rate are independent to age, gender, heart rate and systolic blood pressure [12]. While TDI velocities ( $s'$   $e'$   $a'$ ) are age dependent in a large cohort of healthy (non marathon runners) volunteers [14]. Furthermore it is known that diastolic left ventricular dysfunction has a higher prevalence in elderly and it leads to age-related normal values of mitral inflow velocities and time intervals [15,16]. In contrast to this observation a small study described that left ventricular compliance can be preserved in elderly by regular endurance training [17].

The influence of long standing endurance training on the normal resting values of longitudinal strain has not been examined yet in a larger cohort.

This study aims to describe the normal resting values of systolic and diastolic left ventricular function assessed by speckle tracking in amateur marathon runners, to compare the age dependence in this cohort and to compare the values with recently published normal values in non athletes.

## Methods

### Study population

The organizers of the (2006 and 2007) Berlin Marathon invited local registered amateur runners by e-mail to participate in our study. Runners from Berlin-Brandenburg area who had completed at least one marathon previously were included into this study. All participants underwent clinical examination and echocardiography at least 10 days before the marathon at rest. Exclusion criteria were known cardiovascular disorders (atrial fibrillation, pacemaker, bypass surgery, prosthetic valves or congenital heart disease), signs and symptoms of coronary artery disease, recent pathologic stress test, hypertension and diabetes. All participants had a normal standard echocardiography with no signs of cardiac pathology. In addition, an ECG and a blood sample were taken from every participant. The study protocol was approved by the ethics committee of the Charité University Hospital and conducted according to the Helsinki Declaration. Written informed consent was obtained from each participant. Twenty two healthy non-athlete adults served as controls.

### Echocardiography

Standard transthoracic echocardiography was performed according to the guidelines of the American Society of Echocardiography (ASE) and the European Association of Cardiovascular Imaging (EACVI) on Vivid 7 Dimension

(GE Vingmed, Horton, Norway, M3S 1.5-4.0 MHz transducer) [18]. Segmental Color Doppler recordings were performed to exclude valvular dysfunction. Real-time 2D ultrasound data from the left ventricle at the three apical views with a frame rate greater than 50 frames per second (fps) were stored digitally for offline 2D strain and strain rate analysis (EchoPac PC, GE Vingmed, Horton Norway) (Figure 1). Aortic valve opening and closure was set manually by the opening and closing artefact using a transaortic continuous-wave Doppler signal in order to define end systole for 2D strain analysis. For segmental longitudinal strain and strain rate analysis an 18 segment-model of the LV were used by dividing each LV wall into 3 segments. The region of interest (ROI) was corrected manually in order to analyze the myocardium and to exclude the pericardium. For each segment the quality of speckle tracking was analyzed automatically. Segments with poor tracking were excluded for further measurements. To achieve average 2D peak systolic strain the mean of every wall and then the average of all walls was calculated. Strain rate was measured at the most negative point of SR during the ejection phase. The early (E') and late (A') diastolic strain rate was measured as a marker of the diastolic function in this cohort.

### Statistics

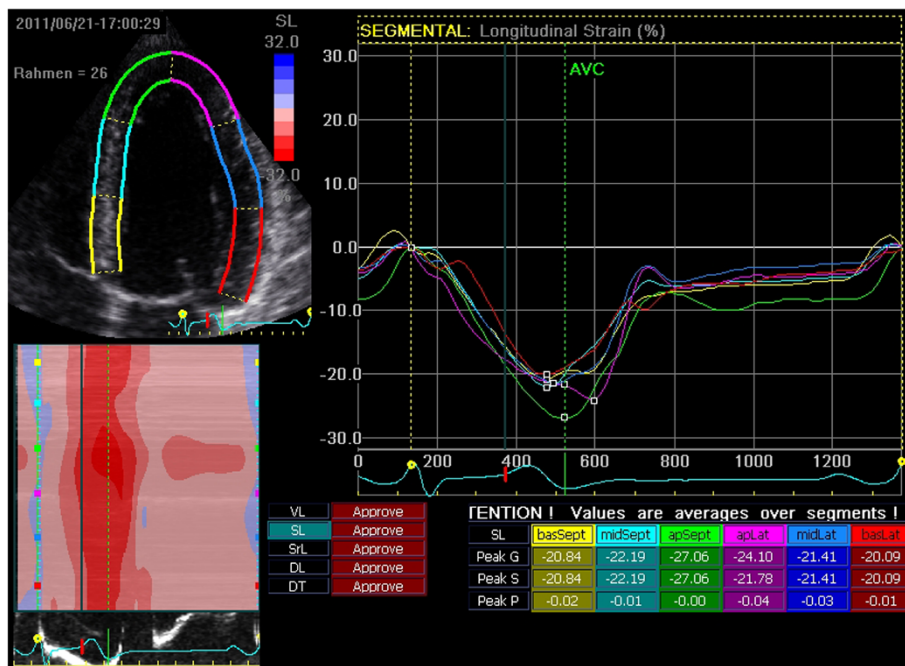
Results are expressed as mean value  $\pm$  standard deviation (SD). Outliers and/or skew distributions differences in interesting groups of individuals were analyzed using nonparametric statistical tests (Mann-Whitney U-test). Spearman's correlation coefficient was calculated in order to test for variable dependencies of 2D strain parameters. Statistical analyses were performed using SPSS for Windows (Release 19.0, Copyright  $\circ$  SPSS Inc.). The comparison of our results and the published values in the literature was performed by the t-test. Significance was assessed at the  $p < 0.05$  level.

The intra- and interobserver variability was measured on different days by three different cardiologists blinded to the results of the other cardiologists. 10 healthy individuals were examined. We calculated the mean longitudinal 2D strain in each segment. We have then calculated the delta of each individual measurement and the mean. Finally the average of the deltas was calculated to measure the intra and inter observer variability.

## Results

### Subject characteristics

Eighty-four marathon runners, 43 women and 41 men participated in this study (mean age  $50 \pm 11$  years). All participants had a normal ECG and blood test including NTproBNP in the normal age and gender-adjusted range according to Hess [19]. The normal NTproBNP levels underline the echocardiography results of cardiac healthy



**Figure 1** 2D-Strain analysis of the left ventricle in the apical two chamber view with average values for peak systolic strain (Peak S) peak global strain (Peak G) and peak positive strain (Peak P) over each segment.

population in our study. The systolic and diastolic blood pressure as well as heart rate and weekly average training differ not significantly between female and male amateur runners. The male runners had a higher running experience explained in a higher amount of previous marathons. The female runners were slightly younger and there was a significant difference in body mass index between the groups. The baseline characteristics, training level and running experience are shown in Table 1.

**Feasibility of 2D strain measurements**

1450 LV wall segments (96%) of a total of 1512 segments had sufficient speckle tracking quality and could be

**Table 1** Baseline characteristics, training level and running experience

	All runners	Male	Female	P
Number	84	41	43	
Age, years	50 ± 11 (22–69)	52 ± 14 (22–69)	48 ± 9 (22–69)	0.044
Body mass index, kg/m <sup>2</sup>	22 ± 2	23 ± 2	21 ± 2	< 0.001
Blood pressure, mmHg				
Systolic	126 ± 14	130 ± 14	124 ± 15	0.052
Diastolic	81 ± 8	83 ± 9	80 ± 8	0.067
Baseline heart rate, 1/min	63 ± 9	62 ± 8	63 ± 9	0.662
Weekly average training, km	54 ± 19	55 ± 23	53 ± 16	0.547
Previous marathons (n)	14 ± 25	21 ± 33	7 ± 10	< 0.001
NT-proBNP [pg/ml]	91 ± 73	68 ± 56	113 ± 81	0.001

analyzed. The best tracking was detectable in the septum and in the basal and medial segments of all LV walls. The worst quality was seen in the anterior wall and in the apex. The number of analyzed segments is summarized in Table 2.

**2D strain values**

Table 3 shows the mean values of peak systolic 2D strain of all LV segments. The average peak systolic strain in the basal segments was significantly lower than in the mid-ventricular segment in *all LV walls except posterior* ( $P = 0.751$ ) and *inferior* ( $P = 0.282$ ). The average peak systolic strain in the mid-ventricular segments was significantly lower than the values of the apical segment in all LV walls. The average global longitudinal peak systolic strain of the left ventricle was  $-23 \pm 2\%$  with peak systolic strain rate  $-1.39 \pm 0.21/s$ , early diastolic strain

**Table 2** Feasibility of 2D-strain, number of analyzed LV-segments

LV segments	Basal	Medial	Apical	All levels
Septal	84	84	82	250
Lateral	82	80	77	239
Inferior	82	82	74	238
Anterior	81	80	74	235
Posterior	83	84	78	245
Anteroseptal	83	84	76	243
All walls	495	494	461	1450

**Table 3 Mean segmental longitudinal peak systolic strain values in %**

	All levels	Apical	Mid	Basal
All walls	-23.0 ± 2.2	-25.6 ± 4.9	-22.6 ± 3.5	-20.9 ± 4.1
Anterior	-22.8 ± 4.4	-24.6 ± 4.8	-22.6 ± 3.9	-21.5 ± 4.0
Anteroseptal	-22.6 ± 5.0	-25.7 ± 5.5	-23.0 ± 3.0	-19.2 ± 4.1
Inferior	-23.8 ± 4.5	-25.2 ± 5.1	-23.5 ± 4.1	-23.0 ± 4.0
Lateral	-23.4 ± 4.3	-26.5 ± 4.5	-22.6 ± 3.1	-21.2 ± 3.2
Posterior	-23.2 ± 4.3	-24.6 ± 4.9	-22.6 ± 3.3	-22.5 ± 4.3
Septal	-22.1 ± 5.0	-27.1 ± 4.1	-21.2 ± 3.0	-18.1 ± 2.8

rate  $2.0 \pm 0.40/s$  and late diastolic strain rate  $1.21 \pm 0.31/s$  (Table 4). The global longitudinal peak systolic strain of the left ventricle differed significantly between female and male amateur runners with lower systolic deformation indices in male runner group. This phenomenon is due to significantly different average strain values in the apical long axis (posterior and anteroseptal wall) and two chamber (inferior and anterior wall) view, while in the four chamber view no significant difference were seen between the groups (Table 5).

There is no correlation between age and average global longitudinal 2D Strain the whole study group (Figure 2).

The interobserver variability for longitudinal 2D strain measurements was 5,0% and the intraobserver variability was 8,4%.

#### Comparison with controls

Table 4 shows the results of our cohort compared to previous published normal 2D strain values in healthy individuals. For comparison we used the data published by Marwick et al. and from the large HUNT Study [12,13]. The global left ventricular longitudinal peak systolic strain and systolic strain rate of our cohort are significantly higher compared to the previous published values of normal individuals. The same phenomenon was observable for the early and late diastolic strain rate values, E' and A' (Table 4). The average longitudinal 2D

**Table 4 Comparison of our results with published normal values in healthy individuals**

Parameter	Peak systolic strain(%)	Peak systolic SR(1/s)	Early diastolic SR(1/s)	Late diastolic SR(1/s)
<b>Athlete</b> (n = 84)	-23.0 ± 2.23	-1.39 ± 0.21	2.00 ± 0.40	1.21 ± 0.31
<b>Control Marwick</b> (n = 192)	-18.6 ± 0.1	-1.1 ± 0.01	1.55 ± 0.01	1.02 ± 0.01
p	< 0.001	< 0.001	< 0.001	< 0.001
<b>Control HUNT study</b> (n = 1266)	-16.7 ± 4.1	-1.03 ± 0.27	no data	no data
p	< 0.001	< 0.001	-	-

**Table 5 Global peak systolic strain values (%) compared by sex**

Global peak systolic strain	Female	Male	P
APLAX	-23.3 (± 2.5)	-22.1 (± 2.6)	0.011
2CH	-24.1 (± 2.7)	-22.1 (± 2.6)	< 0.001
4CH	-23.5 (± 2.7)	-22.7 (± 2.8)	0.126
Average left ventricular strain	-23.6 (± 2.1)	-22.3 (± 2.2)	0.001

APLAX, apical long axis view; 2CH, apical two chamber view; 4CH, apical four chamber view.

strain at rest of the healthy non-athlete adult controls (n = 22) was  $-21.1 \pm 2.5\%$  ( $p < 0.001$ , compared with athletes).

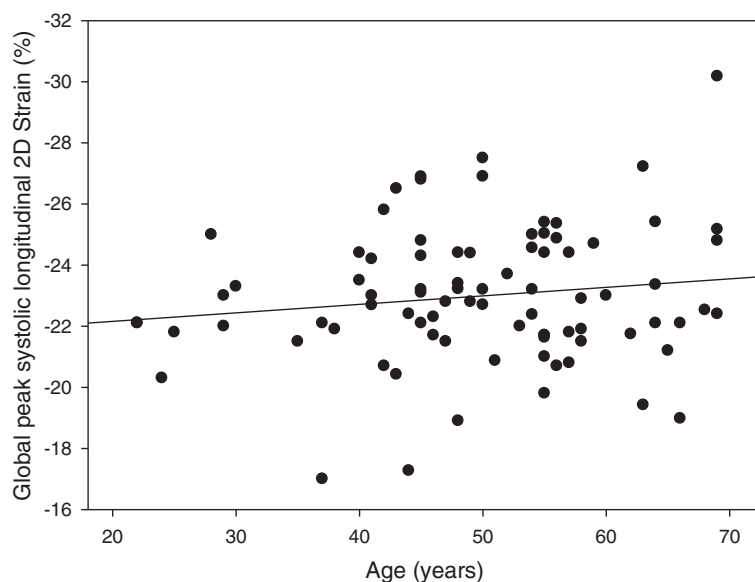
#### Discussion

Our study is the first that has examined normal values of left ventricular longitudinal 2D strain for amateur endurance athletes. The main result of our study is that well-trained athletes have a significantly higher average strain values compared to previously published data of untrained healthy controls. This indicates that resting systolic and diastolic myocardial performance is better in well-trained individuals.

The invasive study by Arbab-Zadeh has shown an increased stroke volume in endurance master athletes at rest. They could also show a better contractility in the master athletes compared to an age-matched control group [17]. We could show an increased contractility at rest also in amateur runners compared to untrained healthy individuals by a non-invasive echo method.

Two large TDI and speckle tracking studies have shown an age-dependant decrease of myocardial deformation in a normal healthy population [13,14]. Our 2D strain data shows no age-related decline of longitudinal contractility in well-trained athletes. Furthermore, the values of the elderly runners are supra-normal compared to the data of Dalen [12] and Marwick [13]. This indicates that in higher ages systolic myocardial performance seems to be preserved in well trained persons; this underlines previous observations of Arbab-Zadeh [17], that elderly master athletes have a myocardial function comparable to young sedentary individuals. One can speculate, that the frequently recognized physiological age-related changes might alternatively be explained as the negative consequences of a sedentary lifestyle.

Not only systolic function, but also diastolic function (as measured by E' and A' Strain rates) was higher in the well-trained athletes compared to the published controls [12]. This underlines the beneficial effects of regular exercise and is supported by the work of Arbab-Zadeh, which has shown in an invasive study that persons with regular endurance training have lower LV filling pressures and a better left ventricular compliance [17].



**Figure 2** Age dependence of longitudinal 2D strain (Spearman correlation coefficient 0.073,  $p = 0.51$ ).

Which mechanism could potentially explain these differences? It could be due to different ages and heart rates of the controls and the athletes. However, the heart rate and the age of the control patients are comparable. In our study the mean heart rate was  $63 \pm 9$  bpm, in the HUNT study  $66 \pm 10/63 \pm 10$  (male/female), in the study published by Marwick et al., the mean heart rate is not mentioned. The age of our athletes ( $50 \pm 11$  years) and the HUNT study population study ( $48 \pm 14$  male/ $51 \pm 14$  female) and the Marwick study ( $51 \pm 12$ ) is comparable [12,13].

As heart rate and age differences do not seem to explain the differences, we speculate based on our observations, that the well trained amateur runners seem to have an increased resting myocardial performance in systole and diastole.

Apart from established cardiovascular risk factors (smoking, hypertension, hyperlipidaemia, diabetes, body mass index) recent epidemiological studies have confirmed that regular physical exercise contributes to reduce mortality [20]. The observed increased myocardial performance in our cohort is possibly one explanation for the beneficial effect of regular exercise.

The correlation between contractility and mortality has been demonstrated previously in patients with heart failure (with reduced ejection fraction and preserved systolic function). Various studies demonstrated a reduced prognosis with reduced contractility [21], and a better prognosis after sustained improvement of contractility [22,23]. Several factors have been discussed to be important factors for better prognosis in athletes: autonomic

status, resting heart rate, heart rate recovery after exercise, heart rate variability and parasympathetic activity. Cardiac contractility might be one additional aspect in this context [24].

However, this study did not have the aim to demonstrate whether increased contractility is reason or major effect or sign for good prognosis.

## Conclusion

This study establishes normal values for longitudinal 2D Strain, Strain Rate and diastolic Strain Rate in a large cohort of healthy well-trained amateur endurance athletes. There is an increased overall longitudinal myocardial contractility at rest compared to the published normal values in the literature indicating a preserved and even supra-normal contractility. We also found significantly better values for diastolic function in our cohort compared to the previous published values of normal individuals indicating a better left ventricular compliance.

There is no age dependent decline of the longitudinal 2D Strain and diastolic values. This underlines the beneficial effects of regular physical exercise even in advanced age.

## Limitations

There is no age and gender matched control group in this study. The comparisons were drawn to historic controls in the literature. Secondly, we have only analyzed longitudinal 2D Strain and do not have invasive data. Our study did not examine age and gender differences.



### Competing interests

The authors declare that they have no competing interests.

### Authors' contributions

SS, Conception and design of the study, analysis and interpretation of echocardiographic data, drafting and revision of the manuscript. YX Conception and design of the study, analysis and interpretation of echocardiographic data. JL, LB and SS, Conception and design of the study. SS, Conception and design of the study, revision of the manuscript. GB, Conception and design of the study. ACB, Conception and design of the study, revision of the manuscript. FK, Conception and design of the study, analysis and interpretation of echocardiographic data, drafting and revision of the manuscript. All authors read and approved the final manuscript.

### Acknowledgements

We thank all the runners who have participated in the study. We are grateful to Dr Gerda Siebert, Christine Scholz, Claudia Kuhn, Dr Petra Schroeckh, for excellent support.

### Author details

<sup>1</sup>Medizinische Klinik für Kardiologie und Angiologie, Campus Mitte, Charité — Universitätsmedizin Berlin, Charitéplatz 1, D – 10117 Berlin, Germany. <sup>2</sup>Klinik für Innere Medizin I – Kardiologie, Helios Klinikum Emil von Behring, Berlin, Germany. <sup>3</sup>Department of Cardiology, East Hospital, Tongji University, Shanghai, China. <sup>4</sup>SCC Running, Berlin, Germany. <sup>5</sup>Department of Sports Medicine, Humboldt University of Berlin, Berlin, Germany.

Received: 1 October 2013 Accepted: 9 February 2014

Published: 26 February 2014

### References

1. Paffenbarger RS Jr, Hyde RT, Wing AL, Hsieh CC: **Physical activity, all-cause mortality, and longevity of college alumni.** *N Engl J Med* 1986, **314**:605–613.
2. Chakravarty EF, Hubert HB, Lingala VB, Fries JF: **Reduced disability and mortality among aging runners: a 21-year longitudinal study.** *Arch Intern Med* 2008, **168**:1638–1646.
3. Sarna S, Sahi T, Koskenvuo M, Kaprio J: **Increased life expectancy of world class male athletes.** *Med Sci Sports Exerc* 1993, **25**:237–244.
4. Kim JH, Malhotra R, Chiampas G, d'Hemecourt P, Troyanos C, Cianca J, Smith RN, Wang TJ, Roberts WO, Thompson PD, Baggish AL: **Race Associated Cardiac Arrest Event Registry (RACER) study group. Cardiac arrest during long-distance running races.** *N Engl J Med* 2012, **366**:130–140.
5. Neilan TG, Januzzi JL, Lee-Lewandrowski E, Ton-Nu TT, Yoerger DM, Jassal DS, Lewandrowski KB, Siegel AJ, Marshall JE, Douglas PS, Lawlor D, Picard MH, Wood MJ: **Myocardial injury and ventricular dysfunction related to training levels among nonelite participants in the Boston marathon.** *Circulation* 2006, **114**:2325–2333.
6. La Gerche A, Burns AT, Mooney DJ, Inder WJ, Taylor AJ, Bogaert J, Macisaac AI, Heidbüchel H, Prior DL: **Exercise-induced right ventricular dysfunction and structural remodelling in endurance athletes.** *Eur Heart J* 2012, **33**:998–1006.
7. Scharhag J, George K, Shave R, Urhausen A, Kindermann W: **Exercise-associated increases in cardiac biomarkers.** *Med Sci Sports Exerc* 2008, **40**:1408–1415.
8. Knebel F, Schimke I, Schroeckh S, Peters H, Eddicks S, Schatzke S, Brechtel L, Lock J, Wernecke KD, Dreger H, Grubitz S, Schmidt J, Baumann G, Borges AC: **Myocardial function in older male amateur marathon runners: assessment by tissue Doppler echocardiography, speckle tracking, and cardiac biomarkers.** *J Am Soc Echocardiogr* 2009, **22**:803–809.
9. Vitarelli A, Capotosto L, Placanica G, Caranci F, Pergolini M, Zardo F, Martino F, De Chiara S, Vitarelli M: **Comprehensive assessment of biventricular function and aortic stiffness in athletes with different forms of training by three-dimensional echocardiography and strain imaging.** *Eur Heart J Cardiovasc Imaging* 2013, **14**(10):1010–1020.
10. Caselli S, Di Pietro R, Di Paolo FM, Pisciocchio C, di Giacinto B, Guerra E, Culasso F, Pelliccia A: **Left ventricular systolic performance is improved in elite athletes.** *Eur J Echocardiogr* 2011, **12**(7):514–519.
11. Perk G, Tunick PA, Kronzon I: **Non-Doppler two-dimensional strain imaging by echocardiography—from technical considerations to clinical applications.** *J Am Soc Echocardiogr* 2007, **20**:234–243.

12. Marwick TH, Leano RL, Brown J, Sun JP, Hoffmann R, Lysyansky P, Becker M, Thomas JD: **Myocardial strain measurement with 2-dimensional speckle-tracking echocardiography: definition of normal range.** *JACC Cardiovasc Imaging* 2009, **2**:80–84.
13. Dalen H, Thorstensen A, Aase SA, Ingul CB, Torp H, Vatten LJ, Stoylen A: **Segmental and global longitudinal strain and strain rate based on echocardiography of 1266 healthy individuals: the HUNT study in Norway.** *Eur J Echocardiogr* 2010, **11**:176–183.
14. Mogelvang R, Sogaard P, Pedersen SA, Olsen NT, Schnohr P, Jensen JS: **Tissue Doppler echocardiography in persons with hypertension, diabetes, or ischaemic heart disease: the Copenhagen City Heart Study.** *Eur Heart J* 2009, **30**:731–739.
15. Owan TE, Redfield MM: **Epidemiology of diastolic heart failure.** *Prog Cardiovasc Dis* 2005, **47**:320–332.
16. Nagueh SF, Appleton CP, Gillebert TC, Marino PN, Oh JK, Smiseth OA, Waggoner AD, Flachskampf FA, Pellikka PA, Evangelista A: **Recommendations for the evaluation of left ventricular diastolic function by echocardiography.** *J Am Soc Echocardiogr* 2009, **22**:107–133.
17. Arbab-Zadeh A, Dijk E, Prasad A, Fu Q, Torres P, Zhang R, Thomas JD, Palmer D, Levine BD: **Effect of aging and physical activity on left ventricular compliance.** *Circulation* 2004, **110**:1799–1805.
18. Lang RM, Bierig M, Devereux RB, Flachskampf FA, Foster E, Pellikka PA, Picard MH, Roman MJ, Seward J, Shanewise J, Solomon S, Spencer KT, St John Sutton M, Stewart W, American Society of Echocardiography's Nomenclature and Standards Committee, Task Force on Chamber Quantification, American College of Cardiology Echocardiography Committee, American Heart Association, European Association of Echocardiography, European Society of Cardiology: **Recommendations for chamber quantification.** *Eur J Echocardiogr* 2006, **7**:79–108.
19. Hess G, Runkel S, Zdunek D, Hitzler WE: **Reference interval determination for N-terminal-B-type natriuretic peptide (NT-proBNP): a study in blood donors.** *Clin Chim Acta* 2005, **360**:187–193.
20. Zhong L, Ng KK, Sim LL, Allen JC, Lau YH, Sim DK, Lee RK, Poh KK, Chua TS, Tsai SP, Wu X: **Minimum amount of physical activity for reduced mortality and extended life expectancy: a prospective cohort study.** *Lancet* 2011, **378**:1244–1253.
21. Zhong L, Ng KK, Sim LL, Allen JC, Lau YH, Sim DK, Lee RK, Poh KK, Chua TS, Kassab GS, Kwok BW, Tan RS: **Myocardial contractile dysfunction associated with increased 3-month and 1-year mortality in hospitalized patients with heart failure and preserved ejection fraction.** *Int J Cardiol* 2013, **168**(3):1975–1983.
22. Winter J, Brack KE, Ng GA: **Cardiac contractility modulation in the treatment of heart failure: initial results and unanswered questions.** *Eur J Heart Fail* 2011, **13**(7):700–710.
23. Dorn GW 2nd, Molkentin JD: **Manipulating cardiac contractility in heart failure: data from mice and men.** *Circulation* 2004, **109**(2):150–158.
24. Almeida MB, Araujo CGS: **Effects of aerobic training on heart rate.** *Rev Bras Med Esporte* 2003, **9**:1–12.

doi:10.1186/1476-7120-12-11

**Cite this article as:** Schatzke et al.: Increased longitudinal contractility and diastolic function at rest in well-trained amateur Marathon runners: a speckle tracking echocardiography study. *Cardiovascular Ultrasound* 2014 **12**:11.

**Submit your next manuscript to BioMed Central and take full advantage of:**

- Convenient online submission
- Thorough peer review
- No space constraints or color figure charges
- Immediate publication on acceptance
- Inclusion in PubMed, CAS, Scopus and Google Scholar
- Research which is freely available for redistribution

Submit your manuscript at  
www.biomedcentral.com/submit

